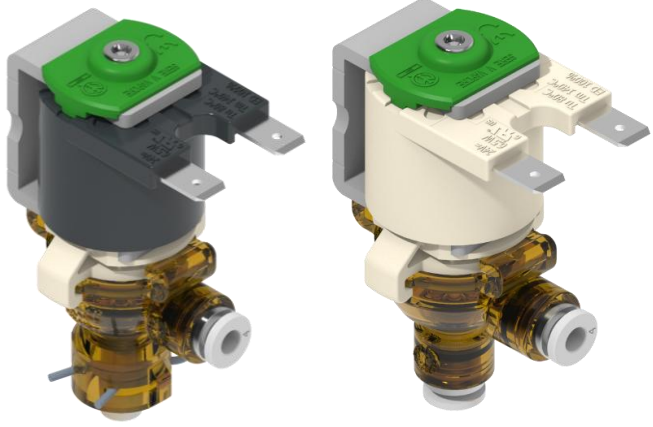
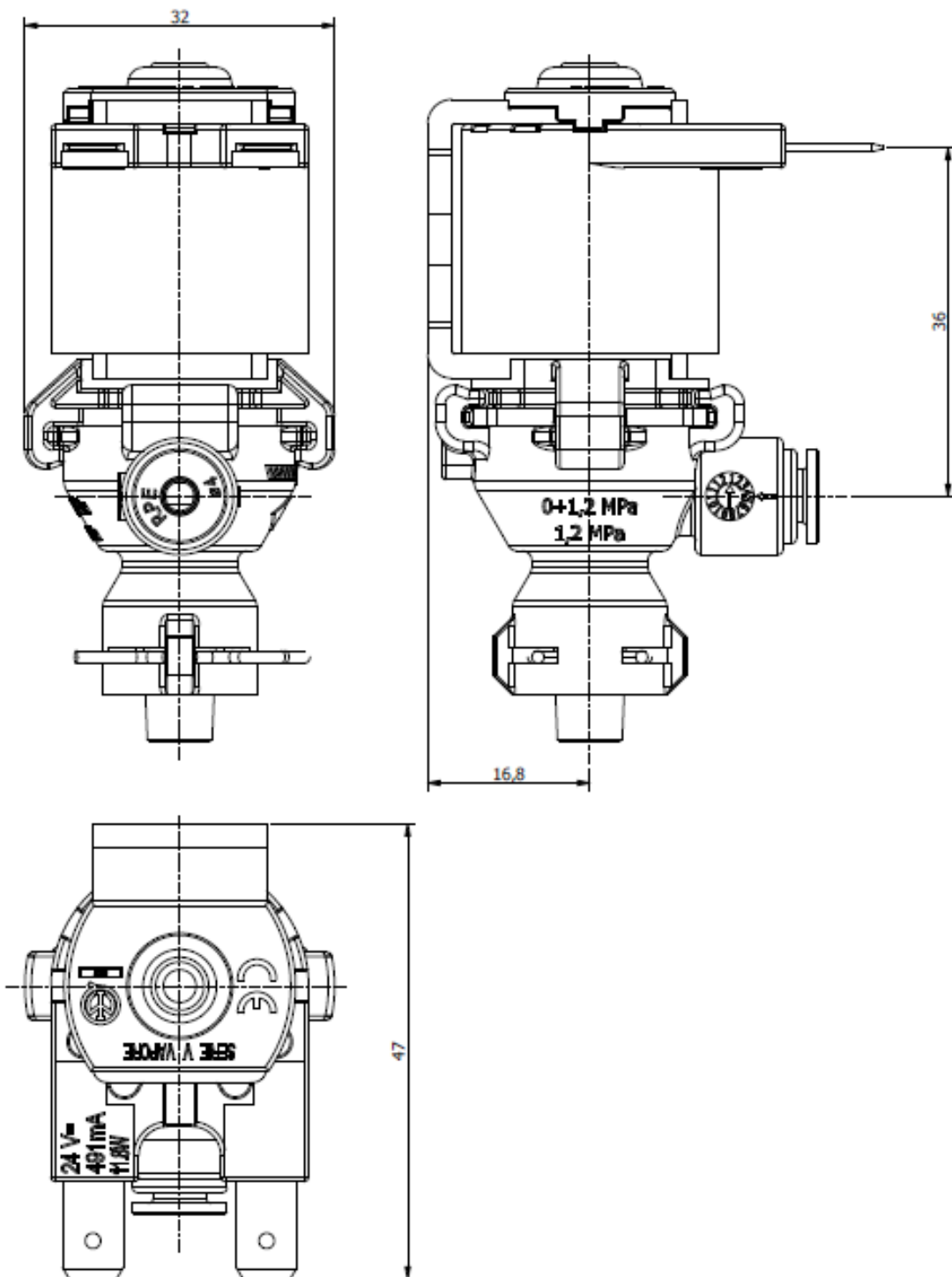
	TECHNICAL DATASHEET <i>SCHEDA TECNICA</i>	Cod.: V2 ED100%
	FAMILY NAME: Steam Series V2	Rev.: 00
	FAMIGLIA: <i>Serie Vapore V2</i>	Data: 26/03/2026

		WORKING CHARACTERISTICS	
		Working pressure:	0 ÷ 4 bar
		Room temperature:	0 ÷ 60°C
		Fluid temperature:	0 ÷ 140°C
		Flow direction:	Unidirectional
		Nominal diameter:	DN 2
		ED - duty cycle	100%
		Max back-pressure:	1,5 bar
		Elect.Pilot/Control:	Direct opening
		CARATTERISTICHE DI LAVORO	
		Pressione di esercizio:	0 ÷ 4 bar
		Temperatura ambiente:	0 ÷ 60°C
		Temperatura fluido:	0 ÷ 140°C
		Direzione fluido:	Unidirezionale
		Diametro di passaggio:	DN 2
		ED – ciclo di lavoro	100%
		Max contropressione	1,5 bar
		Elet.Pilota/Comando:	Apertura diretta
PHYSICAL CHARACTERISTICS		CARATTERISTICHE FISICHE	
Valve body:	PPSU	Corpo valvola:	PPSU
Diaphragm:	EPDM	Membrana:	EPDM
O-ring sealing	EPDM	o-ring tenuta	EPDM
Core:	Stainless steel	Nucleo:	Acciaio INOX
Spring:	Stainless steel	Molla:	Acciaio INOX
Assembly:	Bayonet	Assemblaggio:	Baionetta
INSTALLATION		INSTALLAZIONE	
La valvola può essere montata in qualsiasi posizione senza compromettere il funzionamento		La valvola può essere montata in qualsiasi posizione senza compromettere il funzionamento	
APPLICATIONS		APPLICAZIONI	
Coffee machines Appliances		Macchine per caffè Elettrodomestici	
Medical equipments Irons		Attrezzature medicali Ferri da stiro	
Water dispensers Wherever there is need for water control, even at high temperatures		Distributori d'acqua Ovunque ci sia necessità di controllo dell'acqua, anche ad elevate temperature	
HYDRAULIC CONNECTIONS		CONNESSIONI IDRAULICHE	
Inlet:	Quick Coupling Ø4 mm	Ingresso:	Connessione rapida Ø4 mm
Outlet:	Quick Coupling Ø4 mm	Uscita:	Connessione rapida Ø4 mm
ELECTRICAL CONNECTIONS		CONNESSIONI ELETTRICHE	
See table attached		Vedi tabella in allegato	
SOLENOID RANGE		GAMMA SOLENOIDI	
See table attached		Vedi tabella in allegato	
MARKS AND CERTIFICATIONS		MARCHI ED APPROVAZIONI	
NSF – CE – UL		NSF – CE – UL	

RPE srl reserves the right to changes without prior notice.
For updated and guaranteed specifications, please refer to the website.

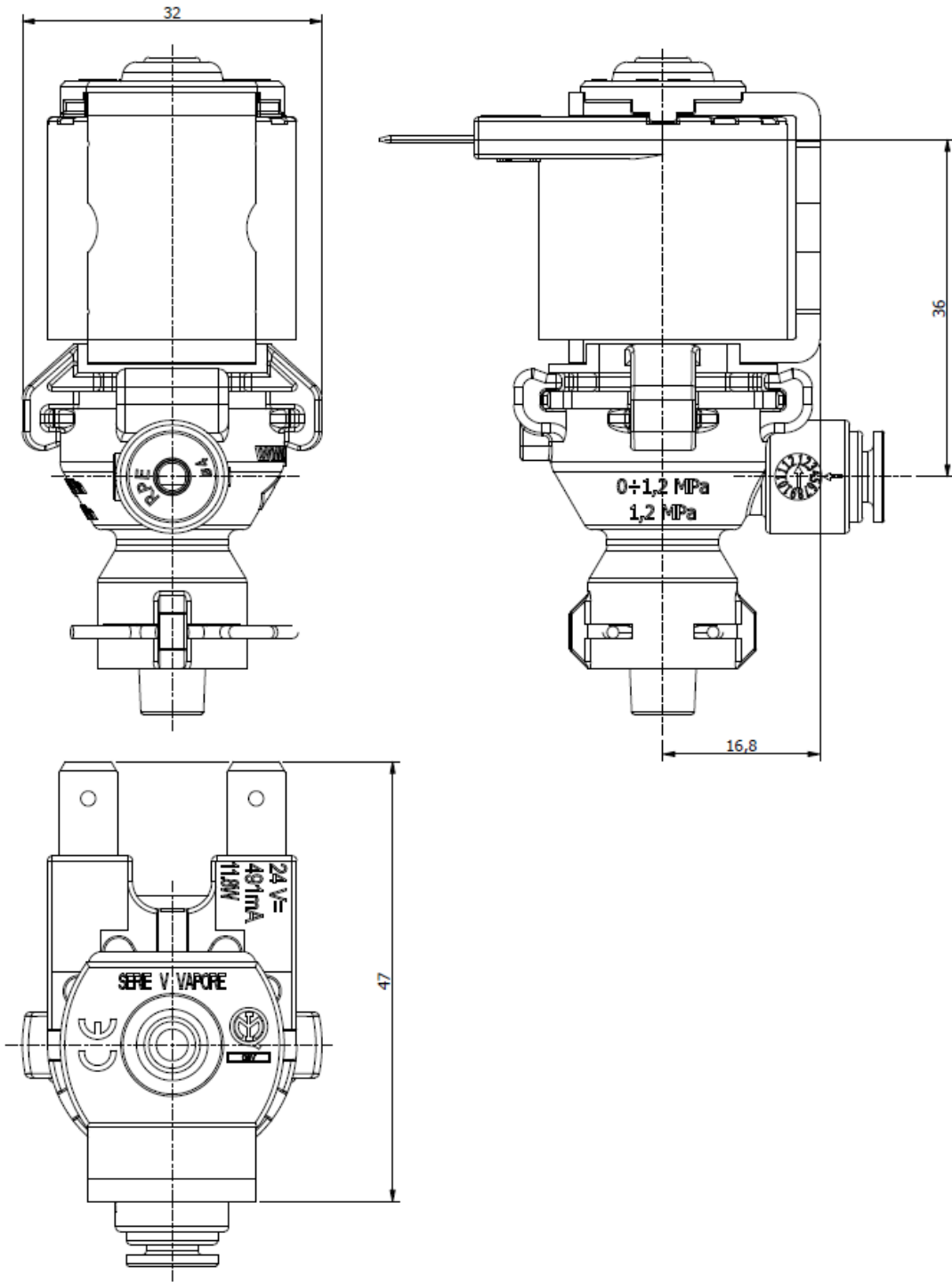
**TECHNICAL DATASHEET***SCHEDA TECNICA*Cod.: **V2 ED100%**FAMILY NAME: **Steam Series V2**Rev.: **00**FAMIGLIA: *Serie Vapore V2*Data: **26/03/2026****DIMENSIONAL DRAWING***DISEGNO DIMENSIONALE***Coupling Inlet - Outlet**

Fork / Forchetta - Push Fit



**TECHNICAL DATASHEET***SCHEDA TECNICA*Cod.: **V2 ED100%**FAMILY NAME: **Steam Series V2**Rev.: **00**FAMIGLIA: *Serie Vapore V2*Data: **26/03/2026****DIMENSIONAL DRAWING***DISEGNO DIMENSIONALE***Coupling Inlet - Outlet**

Fork / Forchetta - Push Fit





TECHNICAL DATASHEET *SCHEDA TECNICA*

FAMILY NAME: **Steam Series V2**

FAMIGLIA: *Serie Vapore V2*

Cod.: **V2 ED100%**

Rev.: **00**

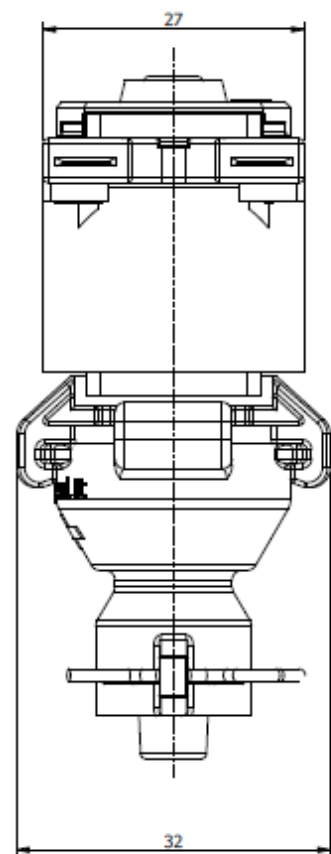
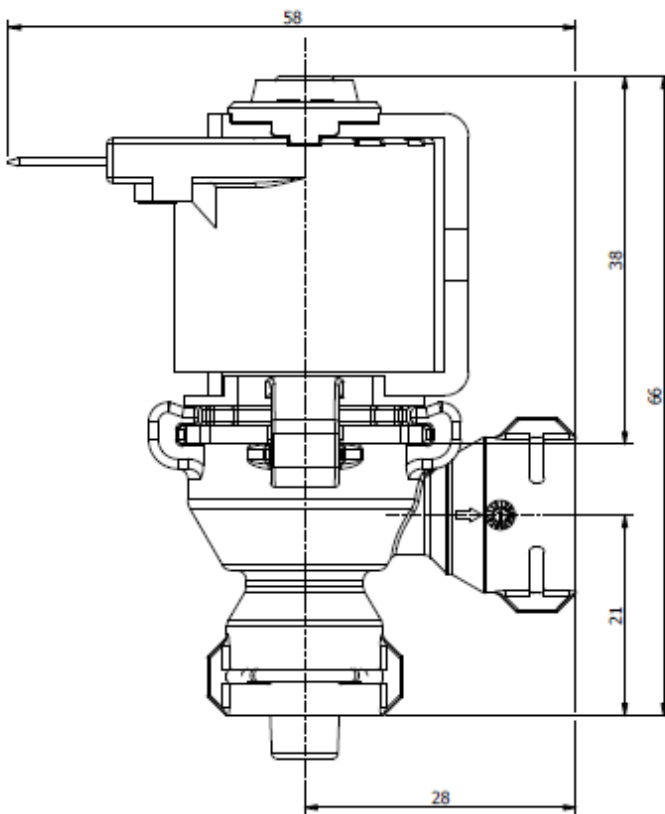
Data: **26/03/2026**

DIMENSIONAL DRAWING

DISEGNO DIMENSIONALE

Coupling Inlet – Outlet

Fork / Forchetta - Fork / Forchetta





TECHNICAL DATASHEET *SCHEDA TECNICA*

FAMILY NAME: **Steam Series V2**

FAMIGLIA: *Serie Vapore V2*

Cod.: **V2 ED100%**

Rev.: **00**

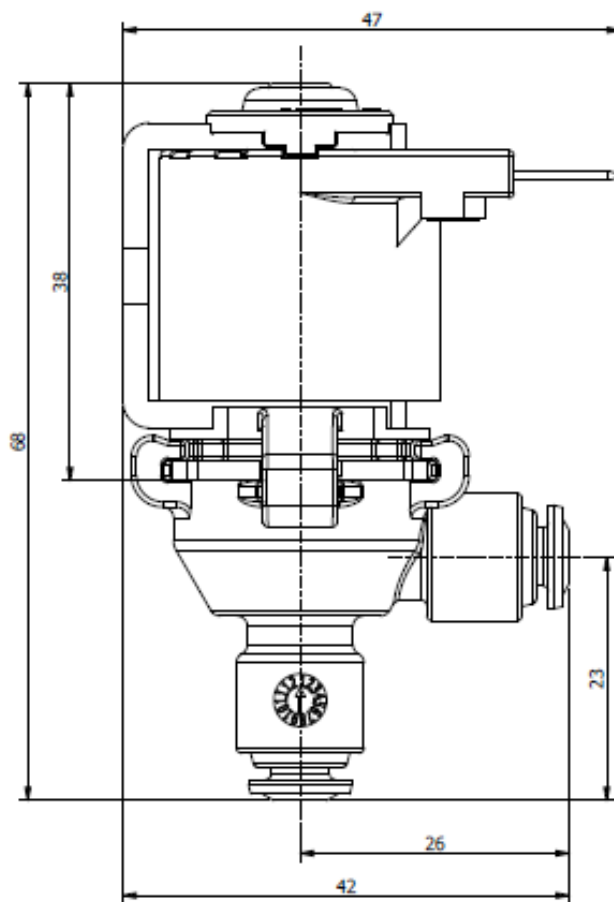
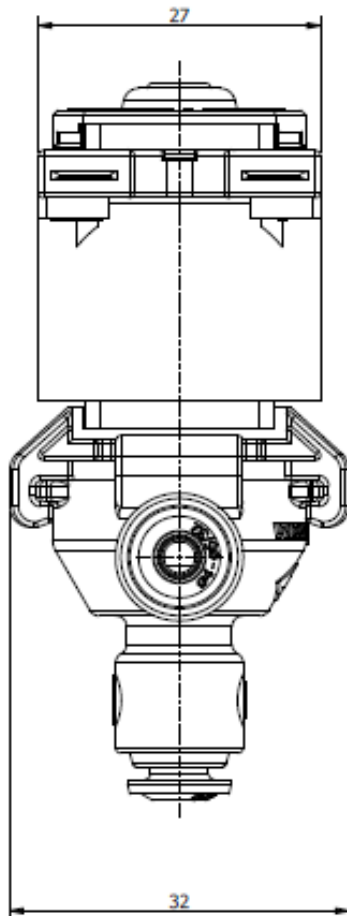
Data: **26/03/2026**

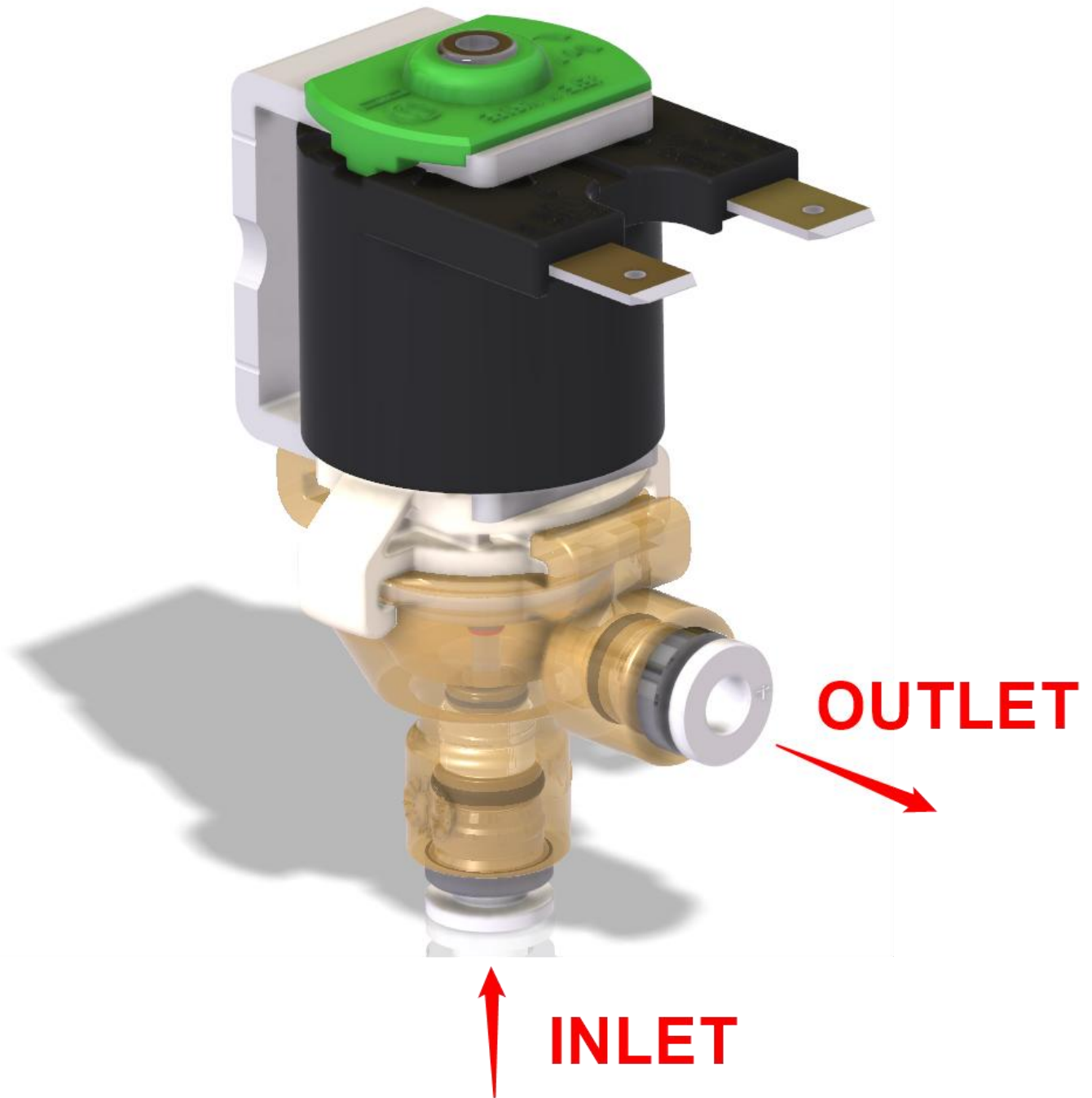
DIMENSIONAL DRAWING

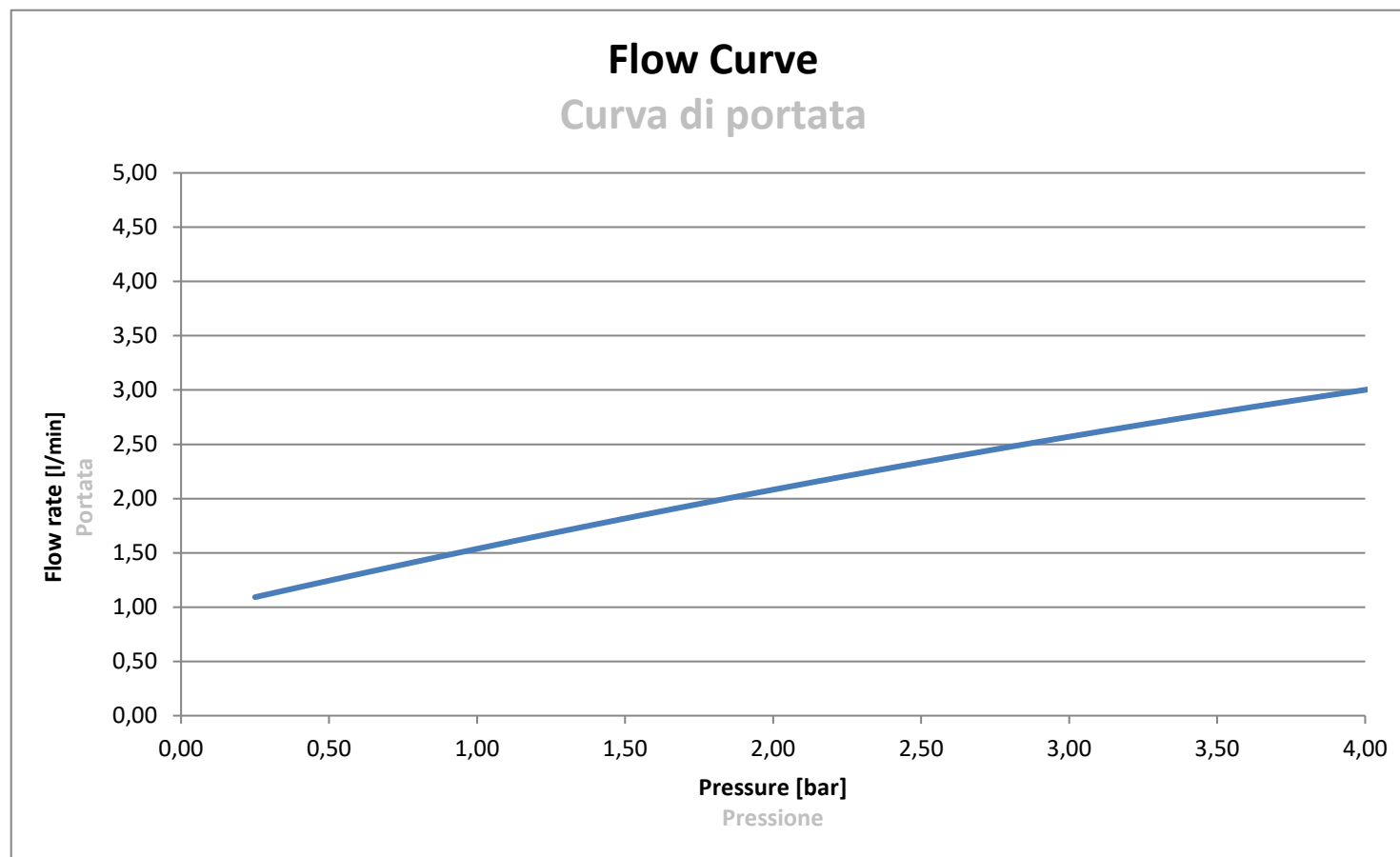
DISEGNO DIMENSIONALE

Coupling Inlet -Outlet

Push Fit – Push Fit



**TECHNICAL DATASHEET***SCHEMA TECNICA*Cod.: **V2 ED100%**FAMILY NAME: **Steam Series V2**Rev.: **00**FAMIGLIA: *Serie Vapore V2*Data: **26/03/2026****WORKING SCHEME***SCHEMA DI FUNZIONAMENTO*

**TECHNICAL DATASHEET***SCHEMA TECNICA*Cod.: **V2 ED100%**FAMILY NAME: **Steam Series V2**Rev.: **00**FAMIGLIA: *Serie Vapore V2*Data: **26/03/2026****FLOW RATE***CURVA DI PORTATA*

**TECHNICAL DATASHEET****SCHEDA TECNICA**Cod.: **V2 ED100%**FAMILY NAME: **Steam Series V2**Rev.: **00**FAMIGLIA: **Serie Vapore V2**Data: **26/03/2026****SOLENOID TABLE**

TABELLA SOLENOIDI

Codice progres. (Progress code)	Tensione (Voltage)	Frequenza (Frequency)	Potenza mantenim (Holding Power)	Potenza di spunto (In Rush Power)	Assorbim (mA) in mantenimento (Holding Current)	Assorbim (mA) in spunto (In Rush Current)	cosφ	ED (funzionamento) (duty cycle)	Faston (F), Cavi (wires)*** Unipolari (C)	Cavi (wires)*** bipolari (in mm)	Approvazioni (Approvals)	NC	NA** (NO)
1	24V DC	/	6.5 W	/	/	/	/	100%	F	/	UL	✓	/
2	24V DC	/	6.5 W	/	/	/	/	100%	F	/	-	✓	/

Legenda (Legend)	NC: Normalmente Chiusa / Normally Closed	ED Funzionamento (Duty Cycle) = 3ON 5 OFF
	NA: Normalmente Aperta / Normally Open	Approvazioni Approvals : ENEC, UL, GW
	NB: Bistabile / Latching	Faston: IP X0
	GW: Glow Wire	Cavi (wires): IP 55
		Classe isolamento (Insulation class): II
		Classe isolamento bobina (Coil insulation class): F
		Tipo faston (Faston type): 6,3 × 0,8 mm